

TONACELL® NCC100

TONACELL® NCC100

$C_6H_{10}O_5)_n$ n
700 m²/g

TONACELL® NCC100

TONACELL® NCC100

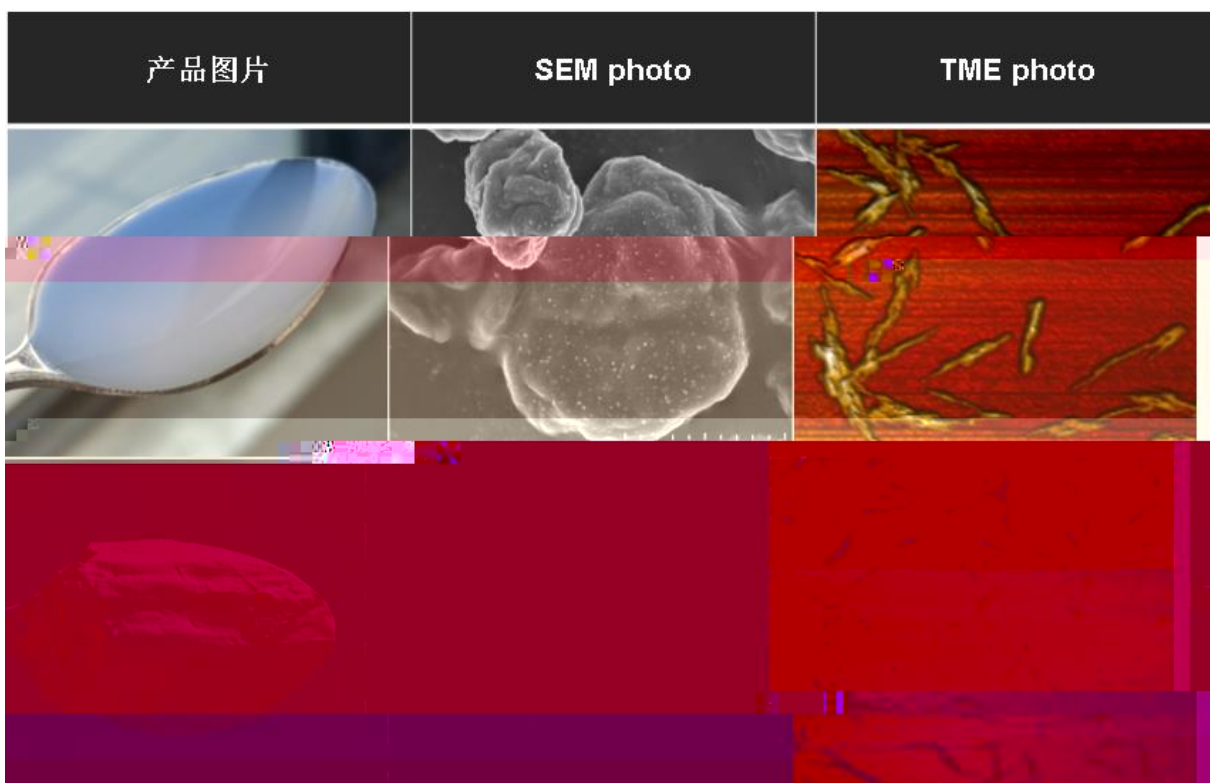


TONACELL® NCC100

	nm	3~5
	nm	77
	%	5.0
	%	70~90
		400
D10	m	4.85
D50	m	9.83
D90	m	18.3

			nm	77
20	2% w/w	B	CPS	7.44
20	5% w/w	B	CPS	40.5
			mg/kg	1.22~1.48
			g/cm ³	0.79~0.86
			cfu/g	10 ³
/			cfu/g	10 ²

TONACELL® NCC100



TONACETONAC

/

10%

TONACELL® NCC100

TONACELL® NCC100

TONACELL® NCC100

5~10

50%

4

180 1875 6215